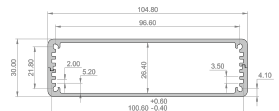
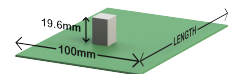
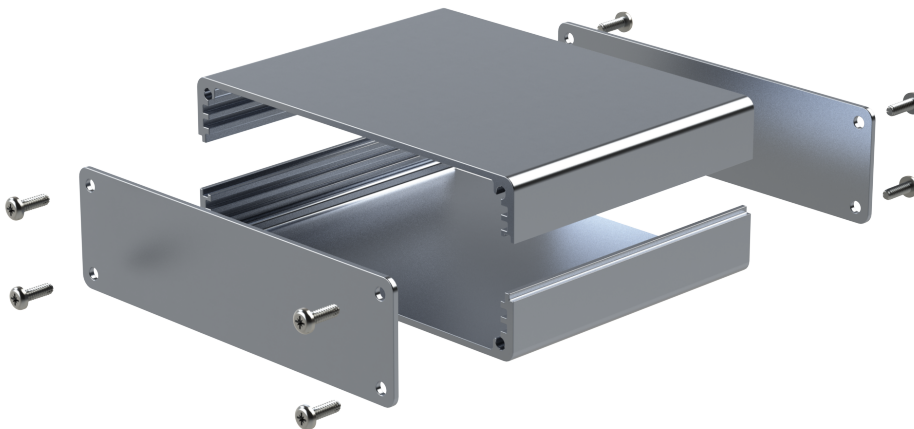


Combi-Case 100 Kit - 30mm

Short Description

- Fits a 100mm wide PCB or carrier plate
- Cut lengths: 80mm, 160mm or 220mm
- Material: Aluminium 6063 T6
- Cut tolerance: -0mm / +0.5mm
- Maximum height of components is 19.6mm
- Weight: 1.88kg/m

Product Images



Description

The Combi Case 100 - 30mm Enclosure Kit consists of all of the options needed to make a complete enclosure.

The kit includes top and base extrusion, end plates and screws.

The maximum height of components on a board mounted in the bottom slot is 19.6mm.

Available in cut lengths of 80mm, 160mm or 220mm.

Designed to fit a 100mm wide PCB.

In silver or black - the cut edges of the extrusion are not anodised.

Extrusion

Material: Aluminium 6063 T6 (HE9)

Finish: Silver anodised 5µm or black anodised 10µm

End Plates

Material: Aluminium 5005 sheet

Finish: Silver anodised 5µm or black anodised 10µm

Thickness: 1.5mm

Screws

No. 4 x 3/8" Posi-pan head Plastite self-tapping screws

Accessories (not included in kit)

- [Carrier Plates](#)
- [Bent End Plate Bracket](#)
- [Rubber Feet](#)
- [Screws \(spares\)](#)

For alternative lengths, colours or for full customisation go to the [customisation](#) area of the website

Additional Information

SD Card Access	No
----------------	----

Product Options

Case Length:	160mm
	80mm
	220mm
Colour:	Black
	Silver