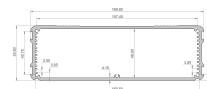
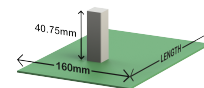
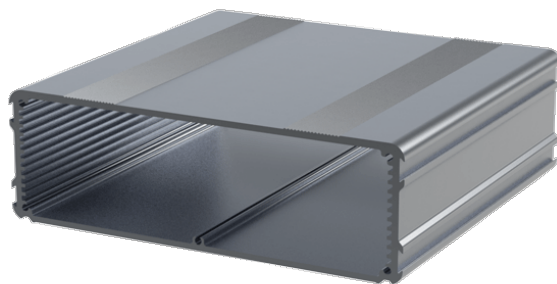


E-Case D

Short Description

- Fits a 160mm wide PCB or carrier plate
- Cut lengths: 80mm, 160mm or 220mm
- Material: Aluminium 6063 T5
- Cut tolerance: -0mm / +0.5mm
- Maximum height of components is 40.75mm
- Weight: 3.4kg/m

Product Images



Description

The E-Case D is an extruded aluminium enclosure box section that has been designed to fit a 160mm wide PCB or carrier plate.

The maximum height of components on a board mounted in the bottom slot is 40.75mm.

Available in cut lengths of 80mm, 160mm or 220mm.

In silver or pre-anodised in black - the cut edges of the extrusion are not anodised.

For alternative lengths, colours or for full customisation go to the [customisation](#) area of the website

Additional Information

SD Card Access	No
----------------	----

Product Options

Length:	80mm
	160mm
	220mm
Colour:	Black
	Silver