

---

# 1550 Series

## Short Description

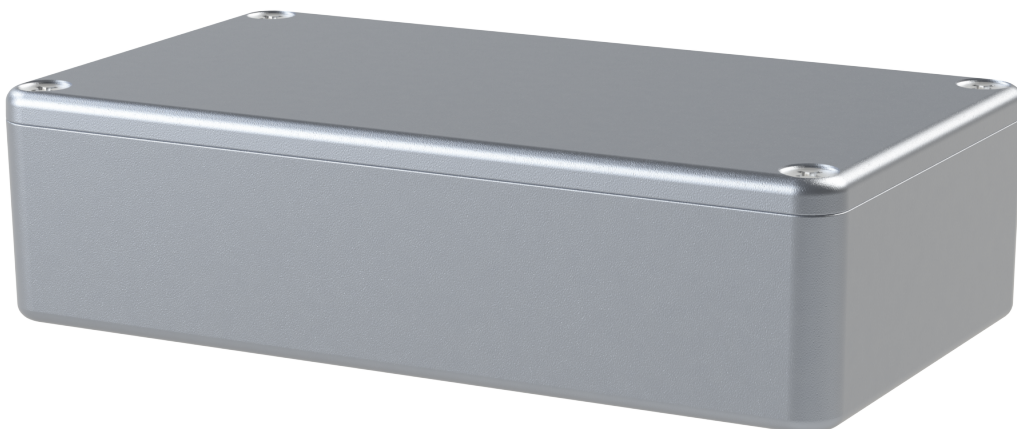
---

Rugged Die-cast aluminium enclosure

- Meets IP54 or IP66
- No internal ribs
- Natural or Black
- Black textured powder coat

## Product Images

---



## Description

---

The 1550 Series is a rugged, diecast aluminum alloy enclosure. Available unpainted version is vibra finished for a smooth surface with no sharp edges or textured black version is coated with tough polyester powder paint for a lasting finish, even after machining. Black screws are included to enhance appearance.

Standard versions are designed to meet IP54 without gasket & IP66 with gasket

Low side wall draft angle (2 degrees or less) for easy P.C. board mounting.

Lap joint construction provides protection against dust and splashing water. Also provides improved EMI/RFI sheilding. The enclosure does not provide shielding when water-tight gaskets are installed.



## Additional Information

---

|                |    |
|----------------|----|
| SD Card Access | No |
|----------------|----|

# Product Options

|            |         |
|------------|---------|
| IP Rating: | IP54    |
|            | IP66    |
| Length:    | 60mm    |
|            | 80mm    |
|            | 89mm    |
|            | 115mm   |
|            | 120mm   |
|            | 140mm   |
|            | 165mm   |
|            | 171mm   |
|            | 222mm   |
|            | 250mm   |
|            | 275mm   |
|            | 35mm    |
|            | 55mm    |
| Width:     | 64mm    |
|            | 90mm    |
|            | 100mm   |
|            | 102mm   |
|            | 121mm   |
|            | 128mm   |
|            | 146mm   |
|            | 175mm   |
|            | 250mm   |
|            | 21mm    |
| Height:    | 26mm    |
|            | 30mm    |
|            | 31mm    |
|            | 51mm    |
|            | 62mm    |
|            | 72mm    |
|            | 97mm    |
|            | 101mm   |
|            | Black   |
| Colour:    | Natural |