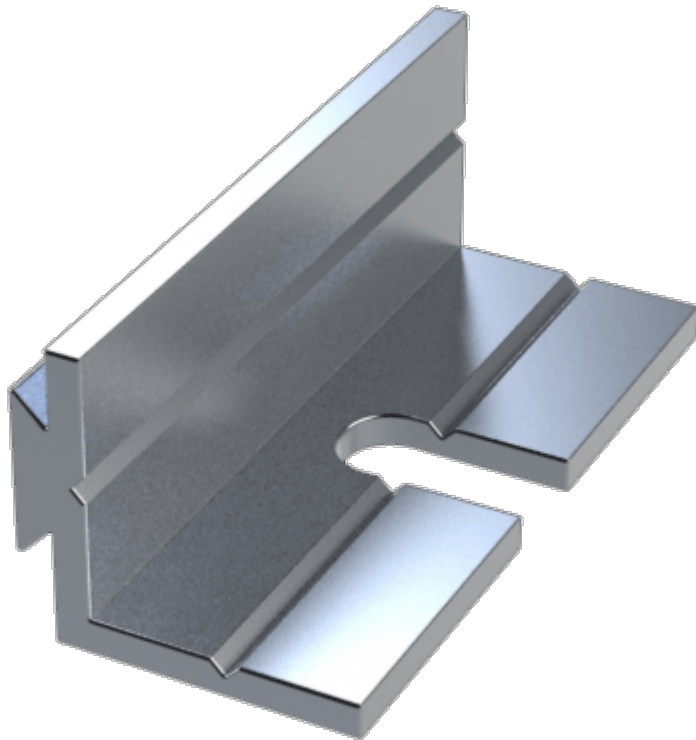


Linc-Lugs

Short Description

Aluminium extruded mounting bracket

- Fits E-Case & U-Case range
- Silver or black
- 40mm or 80mm long
- MT versions comes with fixing screw
- MT versions are sold in pairs



Description

Aluminium extruded mounting bracket for fixing E-Case housings to walls, panels, vehicle bulkheads etc. Linc-Lug slides into any external dovetail feature on E-Case housings. Available in silver or black, in 40mm and 80mm lengths. The MT versions comes complete with a fixing screw and are sold in pairs.

Product Options

Length:	40mm
	40mm with screws
	80mm
Colour:	Black
	Silver