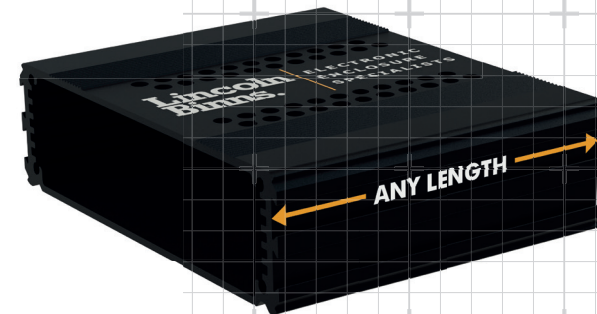


# E-Case Customisation



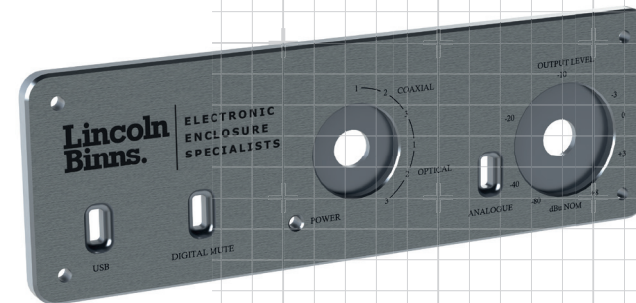
## Extrusion Modifications:

- Custom length – min 30mm
- Colour anodise – Silver, Black, Red, Blue, Green, Grey
- Conductive coating – SurTec 650
- Powder coat – fine texture
- CNC machining – holes, slots recesses for membrane
- Digital print – single or full colour
- Laser marking of text or logo



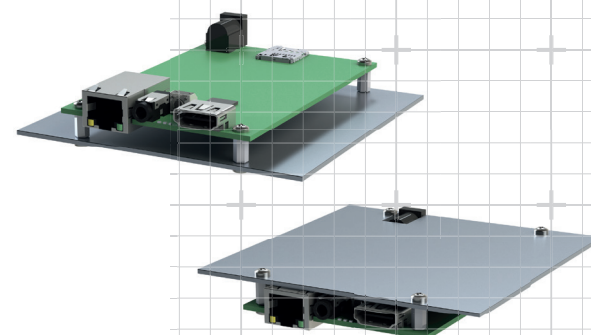
## End Plate Modifications:

- Plate thickness – 1.5mm standard up to 10mm
- Brushing (graining) – standard on 3mm and above
- Oversize plate can be manufactured
- Colour anodise – Silver, Black, Red, Blue, Green, Grey
- Conductive coating – SurTec 650
- Powder coat – fine texture
- CNC machining – holes, slots, recesses for label
- Countersink & counterbore holes
- CNC punch – holes, slots and vent patterns
- Laser marking of text or logo
- Digital print – single or full colour
- Inserts – studs, bushes and nuts



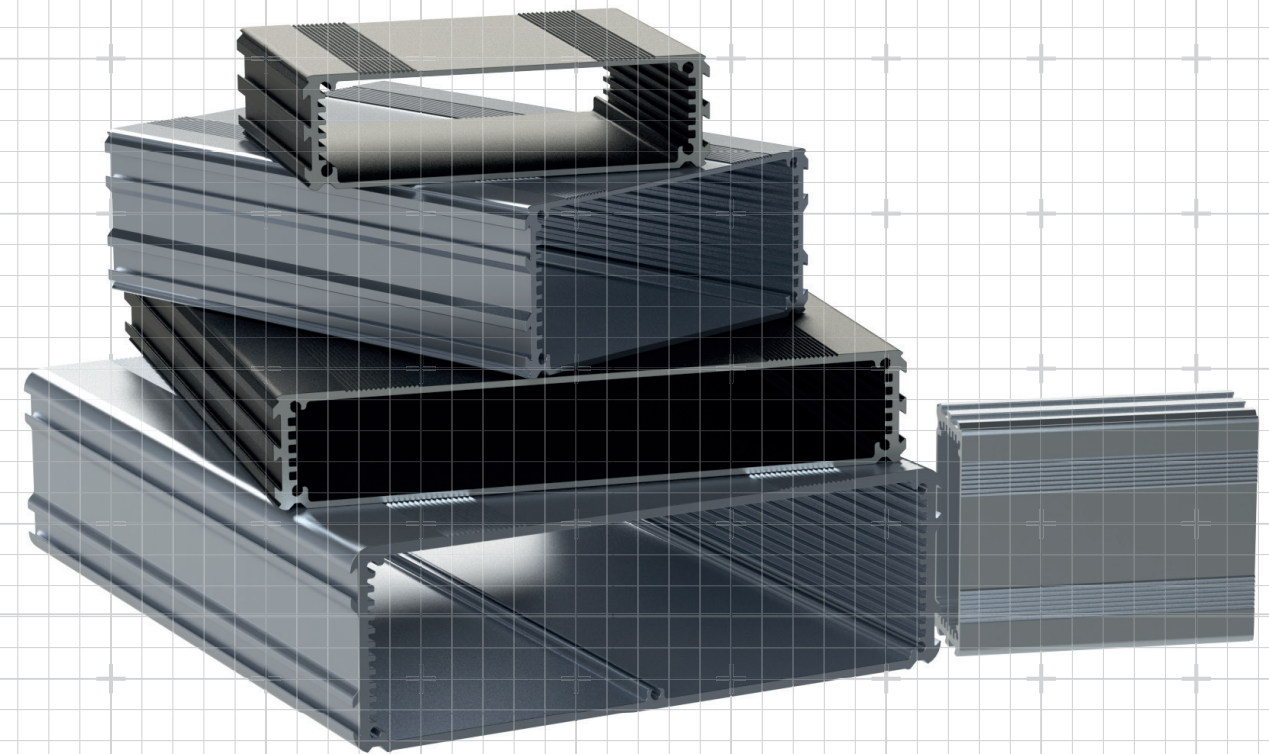
## Carrier Plate Modifications

- CNC machining – holes, slots or cut-outs for components
- Digital print – assembly instructions
- Inserts – studs, bushes and nuts



Contact us:  
+44 (0)1403 860900  
info@lincolnbins.com  
www.lincolnbins.com

# E-Case Range

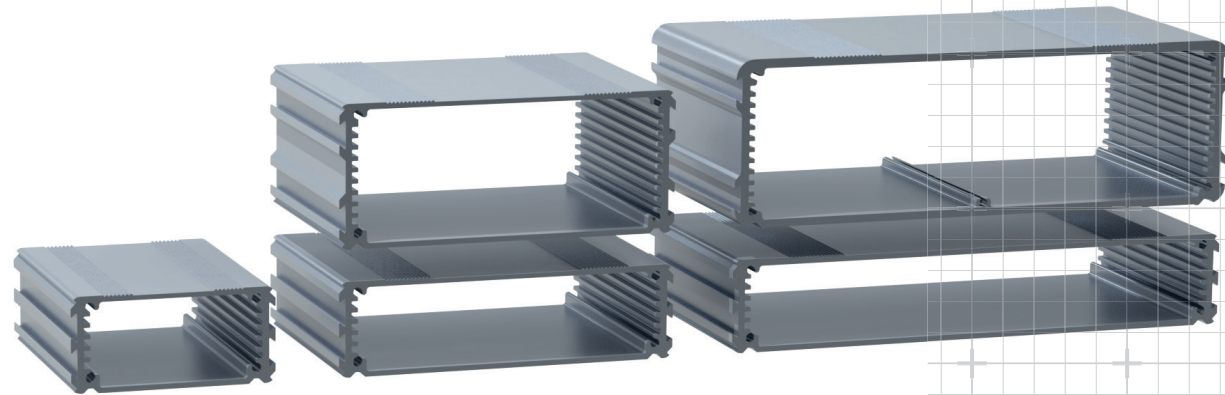


## E-Case Range

- Closed box section extrusion
- Available in 5 sizes
- Pre-anodised Silver or Black as standard
- Custom lengths upon request

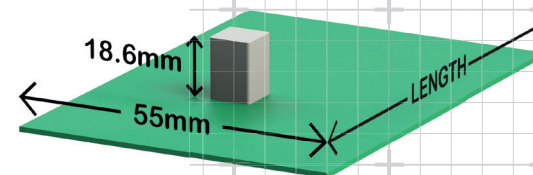
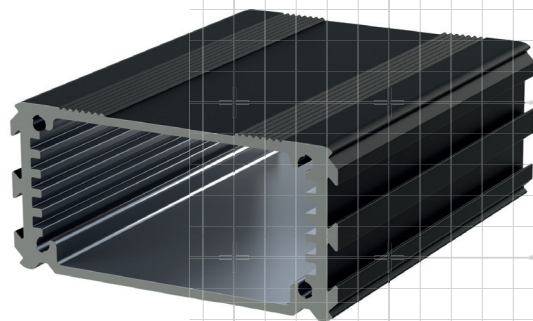
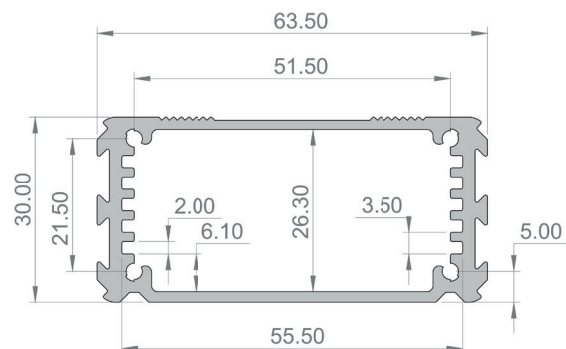
# E-Case Range

The E-Case is a range of extruded aluminium box section that is available in four sizes to suit either 55mm, 100mm or 160mm wide PCBs. Supplied either in pre-anodised silver or black with raw edges.



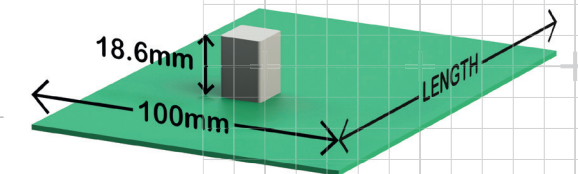
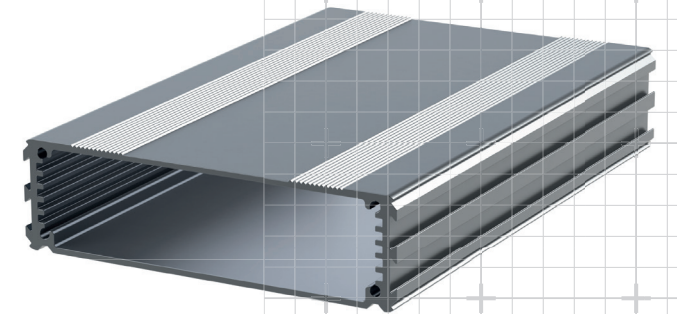
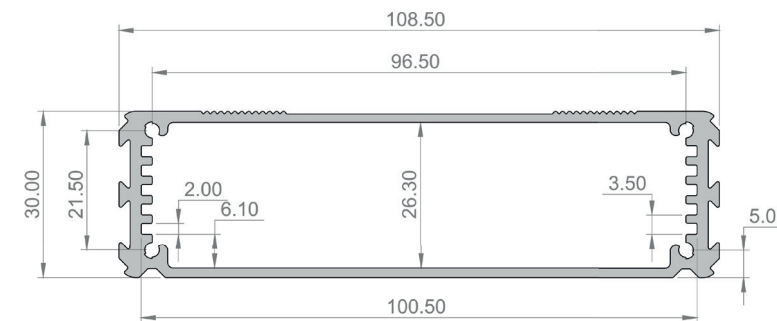
## E-Case A

- Fits a 55mm wide PCB or carrier plate
- Cut lengths: 40mm, 80mm or 120mm
- Material: Aluminium 6063 T6
- Cut tolerance: -0mm / +0.5mm
- Maximum height of components is 18.6mm
- Weight: 1.0kg/m



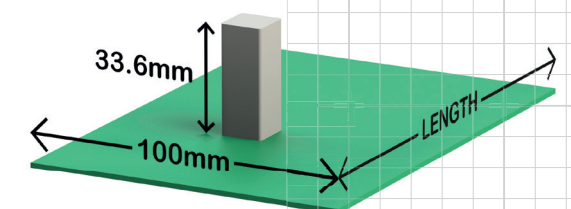
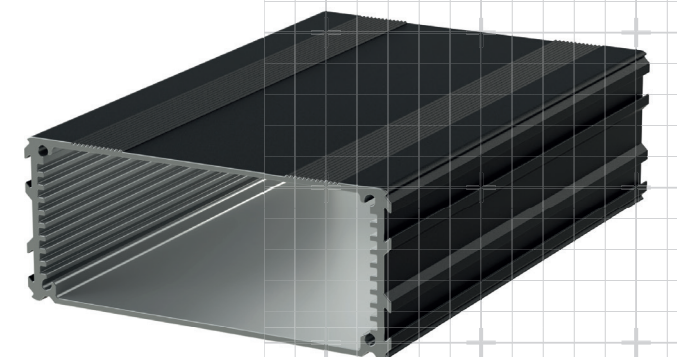
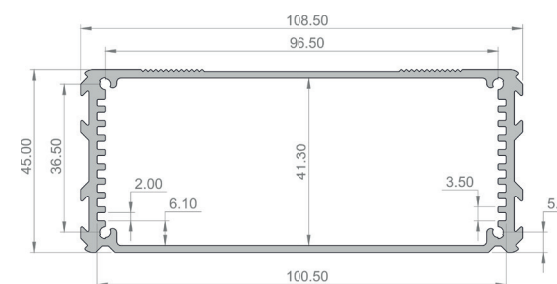
## E-Case B

- Fits a 100mm wide PCB or carrier plate
- Cut lengths: 80mm, 160mm or 220mm
- Material: Aluminium 6063 T5
- Cut tolerance: -0mm / +0.5mm
- Maximum height of components is 18.6mm
- Weight: 1.38kg/m



## E-Case C

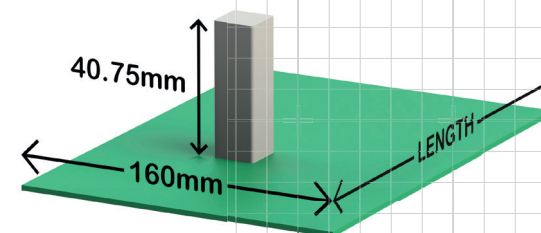
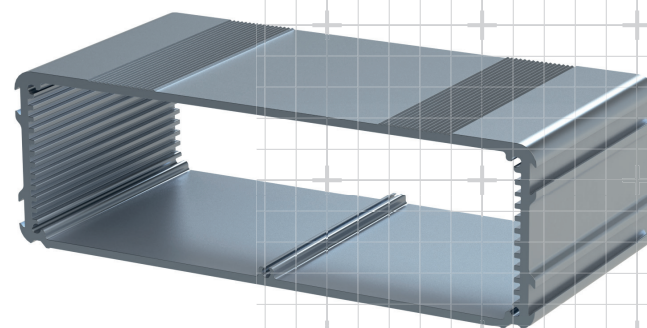
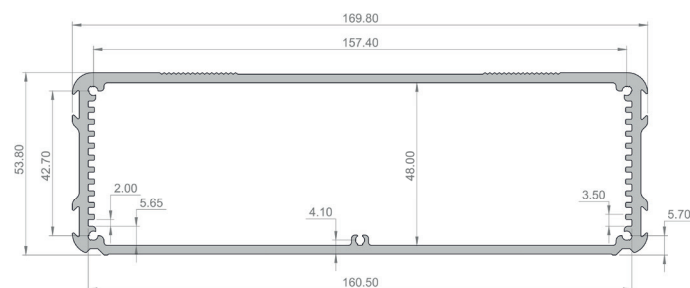
- Fits a 100mm wide PCB or carrier plate
- Cut lengths: 80mm, 160mm or 220mm
- Material: Aluminium 6063 T5
- Cut tolerance: -0mm / +0.5mm
- Maximum height of components is 33.6mm
- Weight: 1.63kg/m





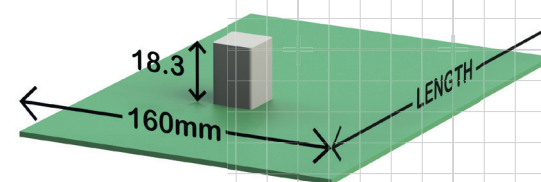
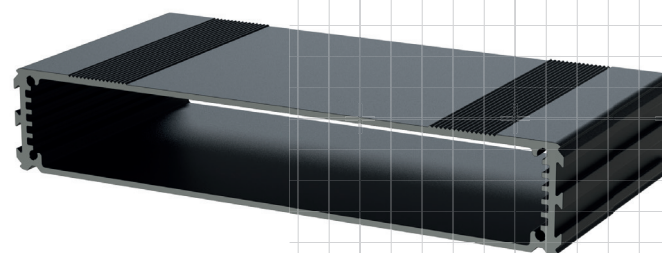
## E-Case D

- Fits a 160mm wide PCB or carrier plate
- Cut lengths: 80mm, 160mm or 220mm
- Material: Aluminium 6063 T5
- Cut tolerance: -0mm / +0.5mm
- Maximum height of components is 40.75mm
- Weight: 3.4kg/m

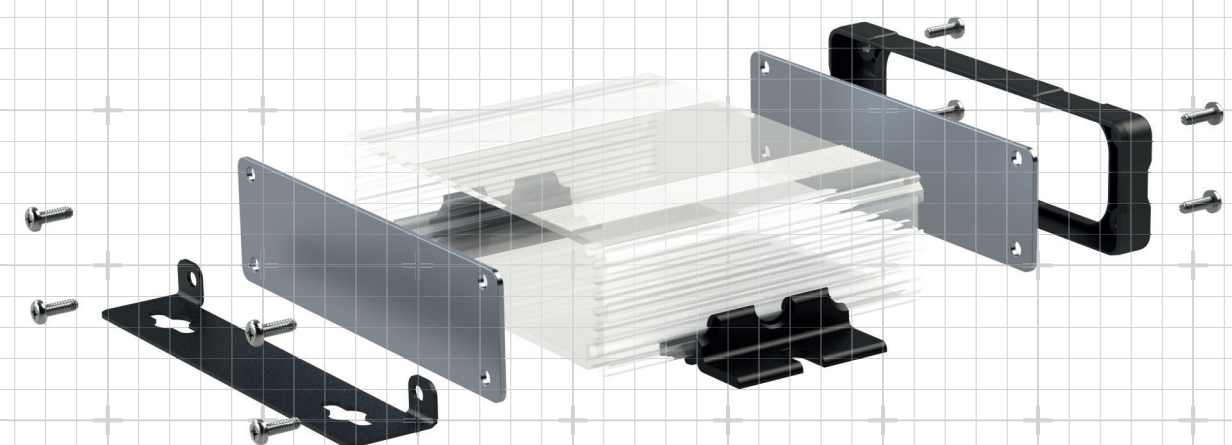


## E-Case F

- Fits a 160mm wide PCB or carrier plate
- Cut lengths: 80mm, 160mm or 220mm
- Material: Aluminium 6063 T5
- Cut tolerance: -0mm / +0.5mm
- Maximum height of components is 18.3mm
- Weight: 2.2kg/m



## E-Case Accessories

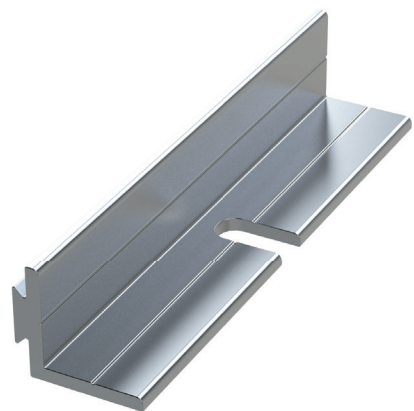


## E-Case Accessories

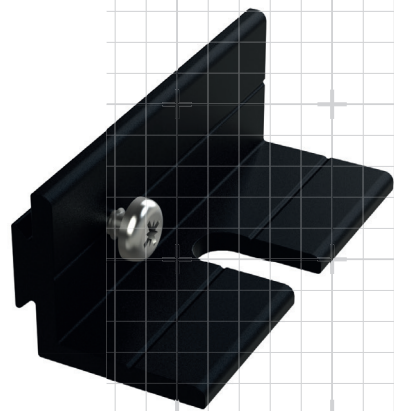
- Surface Mount Options
- VESA Mount
- DIN Rail
- End plates

# E-Case Accessories

## Mounting Options



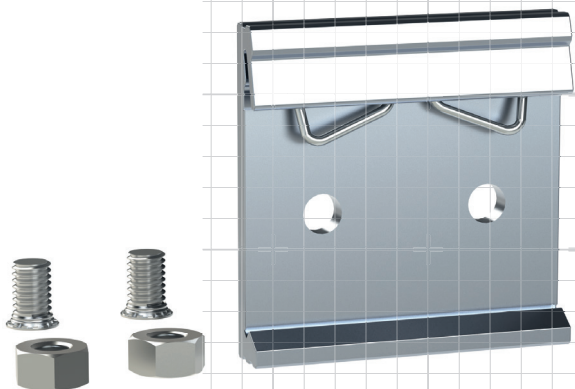
**Linc-Lugs**  
Designed to fit into the dovetail on the side of the E-Case range. Available in 40mm or 80mm and in silver or black



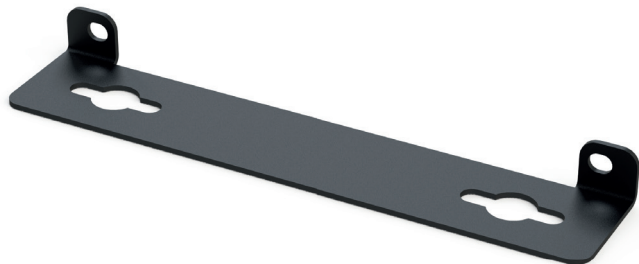
**MT Lugs**  
Designed to fit into the dovetail on the side of the E-Case range. To be held in place with a screw. Available in 40mm in silver or black



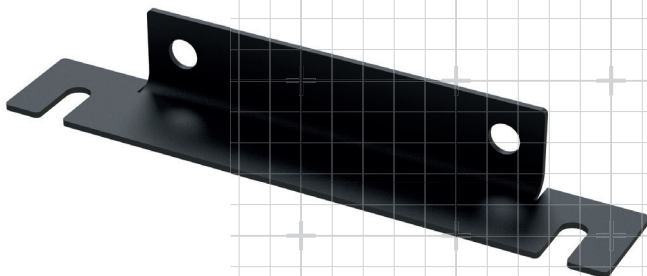
**COB40**  
Plastic surface mount Clip on Bracket – 40mm long that attaches to the side of the E-Case



**DIN Rail Mount**  
Designed to fit into the dovetail on the side of the E-Case range. Available in in silver or black



**VESA Mount**  
Designed to fit into the dovetail on the side of the E-Case range. Suitable to fit a 100mm VESA Mount Bracket

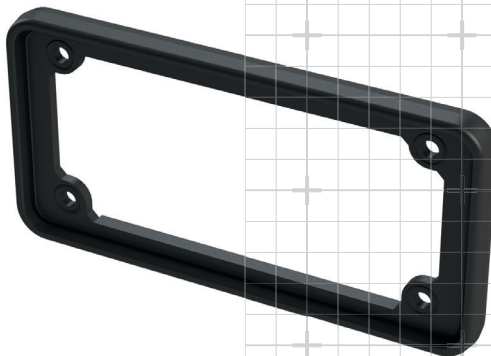


**Bent End Plate Bracket**  
Designed to fit to the E-Case B & C extrusions. Provides a surface mount option without interference of the connectors in the end plates

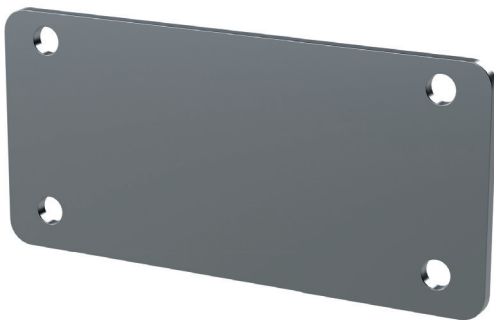
## General Accessories



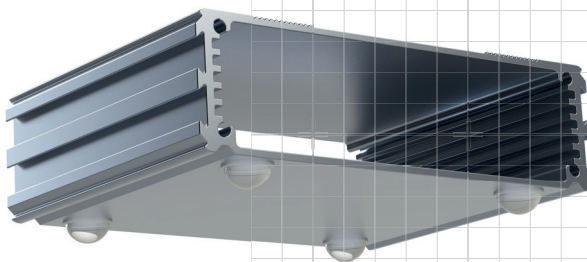
**Bezel**  
Black ABS plastic bezel to provide a more aesthetic look to the E-Case range



**IP Rated Rubber Seal**  
A range of rubber seals for the E-Case A, B & C providing a rating of IP65



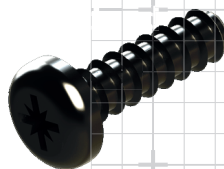
**End Plates**  
A selection of aluminium end plates in Natural, Silver or Black to fit the E-Case range



**Rubber Feet**  
A set of round clear rubber feet



**Carrier Plate**  
1.5mm thick aluminium carrier plates to fit the E-Case range in all set lengths



**Screws**  
A range of self-tapping thread forming and security screws in silver and black