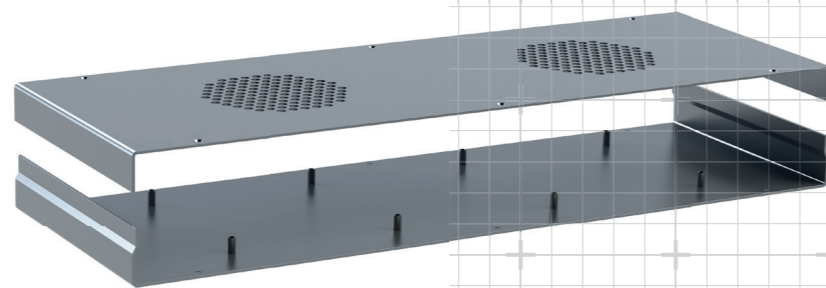




Case Modifications:

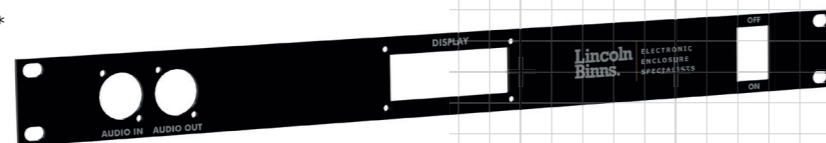
- Stock depth – 100, 150 & 250mm
- Custom depth – 80 – 300mm
- CNC machining – holes or slots
- Inserts – studs, bushes & nuts



Panel Modifications:

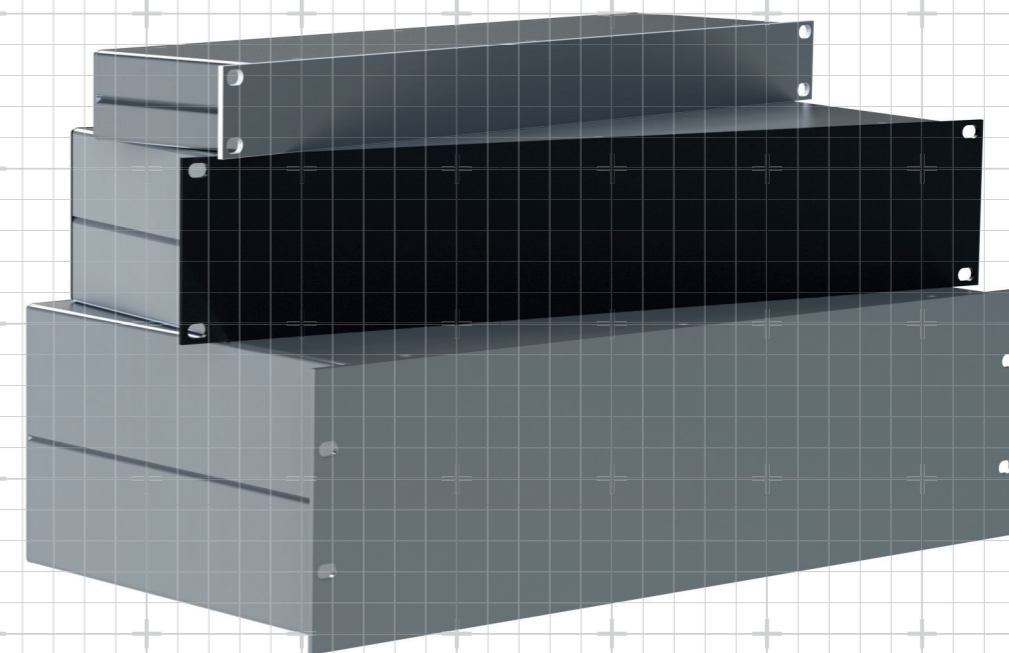
- Colour anodise - Red, Blue Green
- CNC machining – holes, slots, recesses*
- Countersunk or counterbore holes*
- Inserts – studs, bushes & nuts
- Digital Print – single or full colour
- Laser marking – white on colour panel

*All machining edges will remain raw aluminium on standard silver and black panels



Contact us:
+44 (0)1403 860900
info@lincolnbins.com
www.lincolnbins.com

19" Rack Enclosures and panels



19" Rack Range

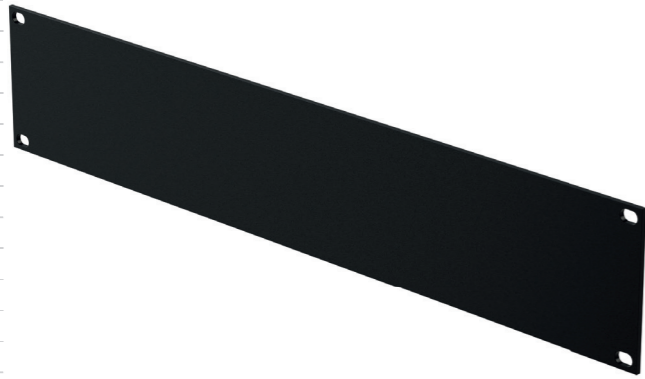
- Enclosures, Extruded & Flat Blanking Panels
- Available in 1U, 2U & 3U
- Enclosures supplied with either silver or black anodised front
- Panels available in pre-anodised silver or black

19" Flat Blanking Panel

19" flat 3mm thick aluminium blanking panels

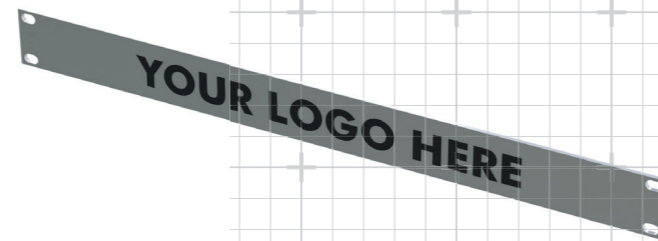
Panel specifications:

- 1U, 2U & 3U versions available
- Pre-anodised Silver or Black
- 3mm thick aluminium



Modification Options:

- Colour anodise – Red, Blue, Green
- Digital Print – single or full colour
- Laser marking – white on colour panel



19" Extruded Panel

19" extruded rack panels – 3mm thick with re-enforcement ribs

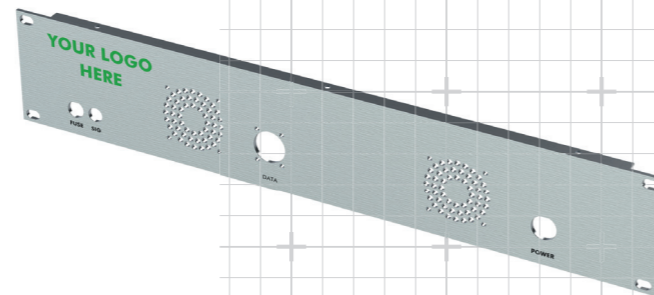
Panel specifications:

- 1U, 2U & 3U versions available
- Pre-anodised Silver or Black
- 3mm thick aluminium



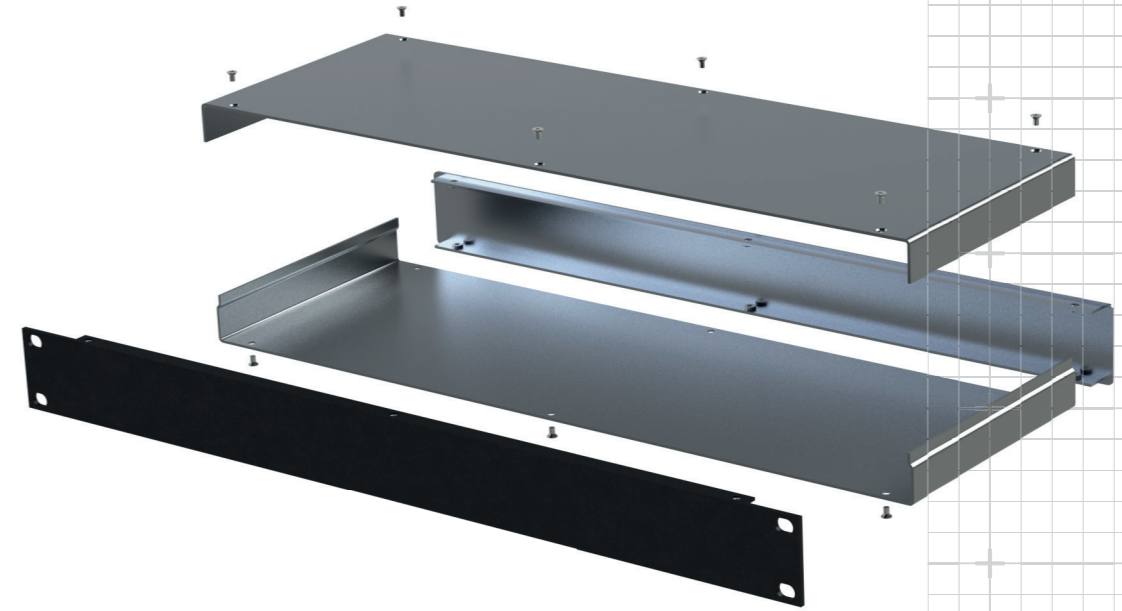
Modification Options:

- Colour anodise - Red, Blue Green
- CNC machining – holes, slots, recesses
- Countersunk or counterbore holes
- Inserts – studs, bushes & nuts
- Digital Print – single or full colour
- Laser marking – white on colour panel



19" Rack Enclosure Range

19" rack enclosures are a 4-piece construction. With extruded front and rear panels and the main case made from folded aluminium u-sections.



Enclosure specifications:

- 1U, 2U & 3U versions available
- 100mm, 150 & 250mm deep – 3U not available in 250mm
- Front panel anodised silver or black
- Front Panel – 3mm extruded aluminium
- Rear Panel – 2.8mm extruded aluminium
- Joggle case – 1.6mm aluminium folded sheet

